

Alennis

CITY OF VANCEBURG, KENTUCKY

ORDINANCE NO. 110.14
(Intent-to-Annex Ordinance, Parcel #2)

**AN ORDINANCE STATING THE INTENT OF THE CITY OF
VANCEBURG TO ANNEX A PARCEL OF REAL PROPERTY
ADJOINING THE EXISTING WESTERLY CORPORATION
LIMITS OF THE CITY OF VANCEBURG AT KY HIGHWAY 9
(AT APPROXIMATE STATION 2720+00 NEAR MILE MARK 12.7)**

Said property being more particularly described as follows:
to-wit:

Being a parcel of land situated between the AA Highway and Clarksburg Road and consisting of the Lewis County School District Finance Corporation (DB 172, page 548), Norcon Lewis LLC (DB 225, page 523), the Lewis County Fire District (DB 250, page 502), David O. Lykins, Jr. (DB 251, page 345), the Southern Manor Baptist Church (DB 150, page 572), Electric Plant Board of the City of Vanceburg (DB 184, page 307), Carl Ginn Garage, the Lewis County Garage and the Commonwealth of Kentucky Garage properties and being more particularly described as follows:

Beginning at a point in the Northerly R/W of the AA Highway at approximate station 2720+00 (near mile mark 12.7); thence with said northerly R/W, S 84° W 297' to a point; thence S 55° W 1,897' to a point at the Green Valley Subdivision at approximate station 2708+90 (near mile mark 12.8); thence leaving said AA Highway and with the line of the Green Valley Subdivision, N 49° W 516' to a point in the center of Salt Lick Creek; thence with the center of Salt Lick Creek the following seven (7) calls: N 35° E 838' to a point; N 40° W 410' to a point; S 66° W 423' to a point; N 10° W 268' to a point; N 33° E 1,150' to a point; N 79° E 308' to a point; S 69° E 1,637' to a point; thence leaving said Salt Lick Creek, S 1° W 786' to the point of beginning, being approximately 80 acres, more or less.

All bearings and distances are approximate and not obtained from a survey.

See Kentucky Department of Highways Project AA Highway Section 21-1, ED 01-21A.

NOW, THEREFORE, BE IT ORDAINED BY THE CITY COUNCIL OF THE CITY OF VANCEBURG, KENTUCKY:

Section 1 Purpose of Authority

A. It is the purpose of this Ordinance to state the intent of the City Council of the City of Vanceburg, Kentucky to annex the hereinabove described unincorporated territory.

B. This Ordinance is enacted under the power vested in the City of Vanceburg by KRS 82.082, KRS 81A.400, KRS 81A.420, and KRS 81A. 425.

Section 2 Conflicting Ordinances Repealed

All other Ordinances and parts of Ordinances in conflict with this Intent-to-Annex Ordinance are hereby repealed to the extent of the conflict.

Section 3 Effective Date

This Ordinance shall take full force and effect immediately upon publication as required by KRS 83A.060.

Section 4 No annexation shall occur unless and until proper passage of an Ordinance finalizing the intent to annex is enacted by the City Council of the City of Vanceburg in accordance with KRS Chapter 81A.

Section 5 The property intended to be annexed is desirable for annexation by the City of Vanceburg, and does not include any territory in another incorporated city.

At a meeting of the City Council of the City of Vanceburg, Kentucky held on December 3, 2018, on motion made by council person _____ and seconded by council person _____, the foregoing Intent-to-Annex Ordinance was adopted, after full discussion, by the following vote:

Shane Hull	yes/no
Charles Hall	yes/no
Chris McGlone	yes/no
Karen Fraley	yes/no

Kathy McCann
Joni Pugh

yes/no
yes/no

Approved by:

Matt Ginn, Mayor

Attest:

Jeana Billman, City Clerk

First Reading: _____

Second Reading: _____

City of Vanceburg
189 Second Street
Vanceburg, KY 41179

PROPOSED CITY OF VANCEBURG ANNEXATION

PARCEL #2

Being a Parcel of land situated between the AA Highway and Clarksburg Road and consisting of the Lewis County School District Finance Corporation (D.B. 172, pg. 548), Norcon Lewis LLC (D.B. 225, pg. 523), the Lewis County Fire District (D.B. 250, pg. 502), David O. Lykins, Jr. (D.B. 251, pg. 345), the Southern Manor Baptist Church (D.B. 150, pg. 572), Electric Plant Board of the City of Vanceburg (D.B. 184, pg. 307), Carl Ginn Garage, the Lewis County Garage and the Commonwealth of Kentucky Garage properties and being more particularly described as follows:

Beginning at a point in the Northerly R/W of the AA Highway at approximate station 2720+00 (near mile mark 12.7).

Thence, with said northerly R/W, S 84°W, 297' to a point.

Thence, S 55°W, 1,897' to a point at the Green Valley Subdivision at approximate station 2708+90) near mile mark 12.8).

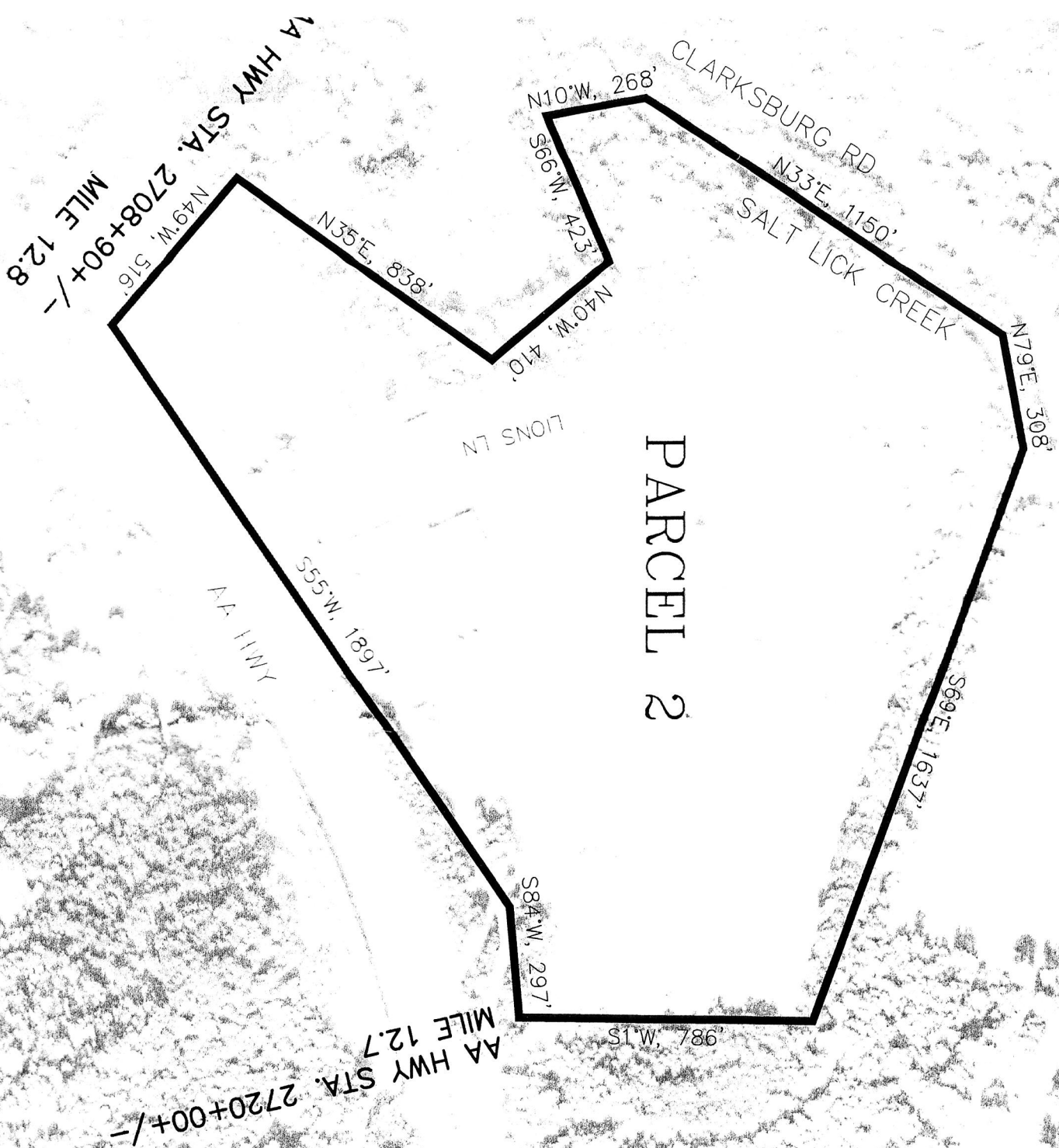
Thence, leaving said AA Highway and with the line of the Green Valley Subdivision, N 49°W, 516' to a point in the center of Salt Lick Creek.

Thence, with the center of Salt Lick Creek the following seven (7) calls: N 35°E, 838' to a point; N 40°W, 410' to a point; S 66°W, 423' to a point; N 10°W, 268' to a point; N 33°E, 1,150' to a point; N 79°E, 308' to a point; S 69°E, 1,637' to a point.

Thence leaving said Salt Lick Creek, S 1°W, 786' to the point of beginning, being approximately 80 acres more or less.

All bearings and distances are approximate and not obtained from a survey.

See Kentucky Department of Highways Project AA Highway Section 21-1, ED 01-21A.



PARCEL 2

CITY OF VANCEBURG EXISTING CORPORATION LIMITS

The City of Vanceburg, Kentucky
 189 Second Street
 Vanceburg, KY 41179
 ph. 606.796.3044 fax 606.796.6096

THE CITY OF
 SALT LICK C
 ANNEX E
 LEWIS COUNTY

REVISIONS :

JOB # 444-004
 DATE June 2018

SCALE 1" = 400'

EXHIBIT 02